

DATABASE PERFORMANCE MONITORING: USE THE 80/20 RULE WITH PRECISE

DATABASE PERFORMANCE MONITORING

Over 80% of performance issues are because of poor application or database design. To identify those performance issues, you need a tool that focuses on them. A tool that shows where most of the issues occur.

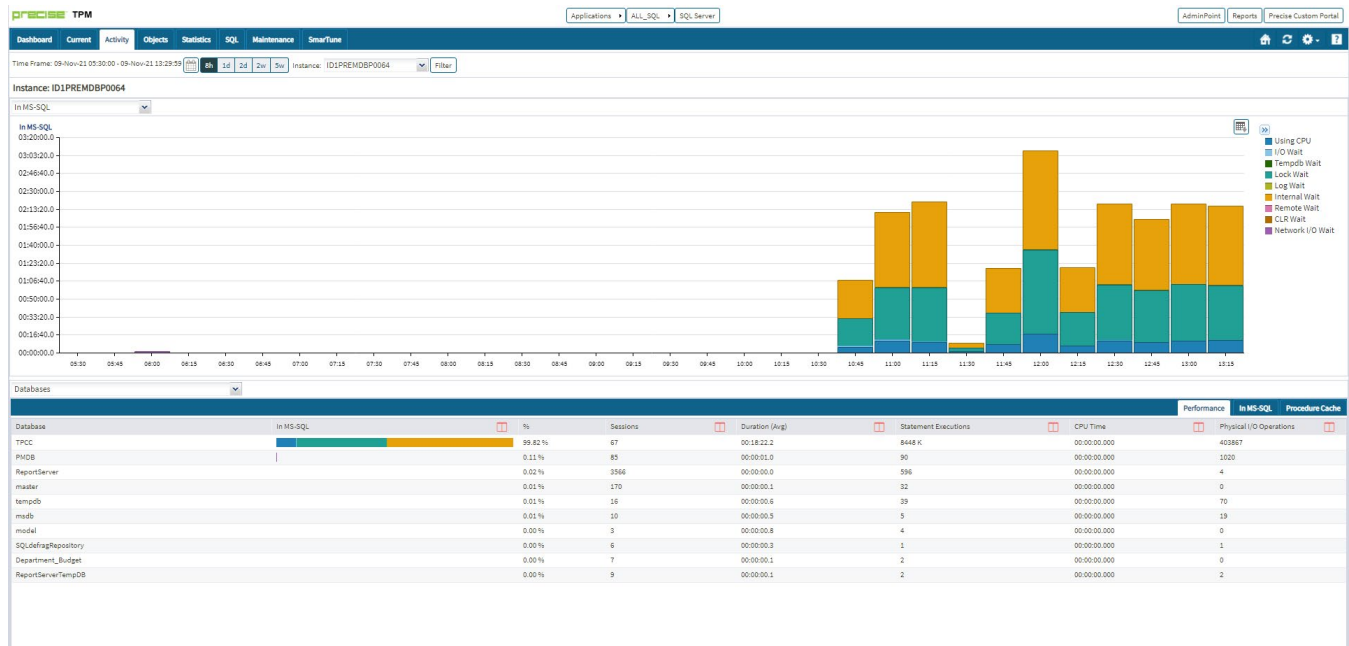
Precise allows you to drill straight down into those performance issues that are consuming most of the resource and time.

With over 80% of performance issues because of application, then we should pay attention to these issues first.

Precise shows you the busiest databases, programs, stored procedures, SQL statements, users, Java calls, application server machines, and sessions and sorts them by how much performance impact they are having.



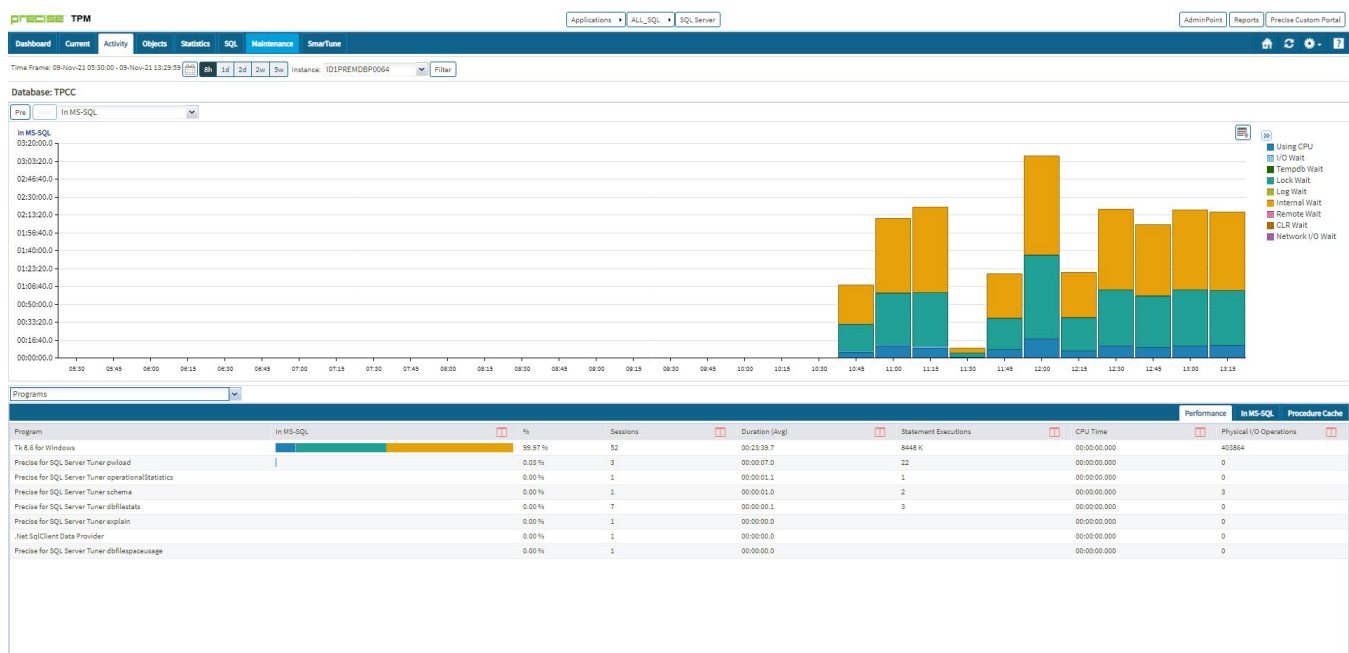
Precise drill down capabilities allow you to focus on the busiest database, the busiest program in that database and the busiest statement in that program. This allows you to identify fast which particular SQL statement is experiencing the biggest performance issues.



This focused approach allows you to identify fast where the performance issues are and protects you from distractions by other data that is not relevant.

By focusing on the busiest component allows you to analyze those components that are consuming the most resources and might benefit from tuning.

Precise allows you to focus at an application level and identify those poor performing programs, stored procedures and statements.



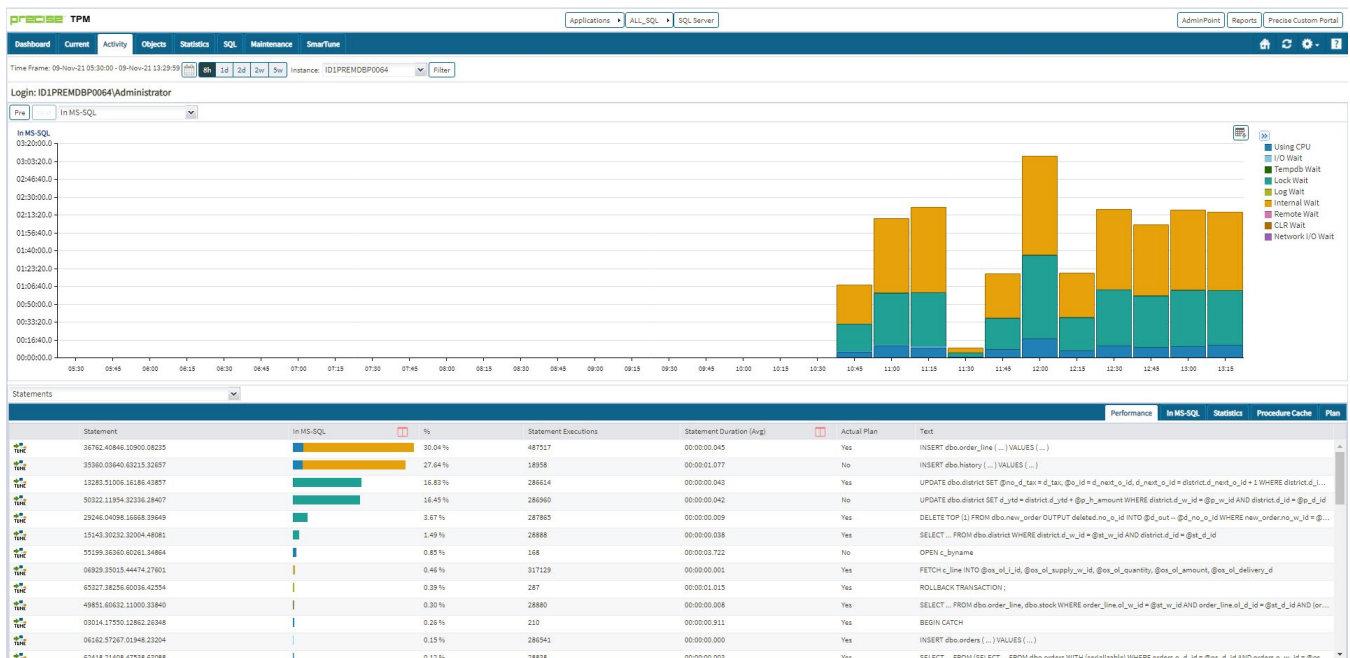
Precise guides you through the databases and allows you to focus on the busiest one. It then allows you to drill down further and discover which programs are the most expensive. You can analyze stored procedures and SQL statements using a very narrow focused approach with Precise.

Precise shows the busiest programs within a database at different levels.

Precise shows the busiest stored procedures and allows you to drill down to the SQL statements that form the stored procedure.

Precise always shows the busiest SQL statements first and allows you to focus on tuning these

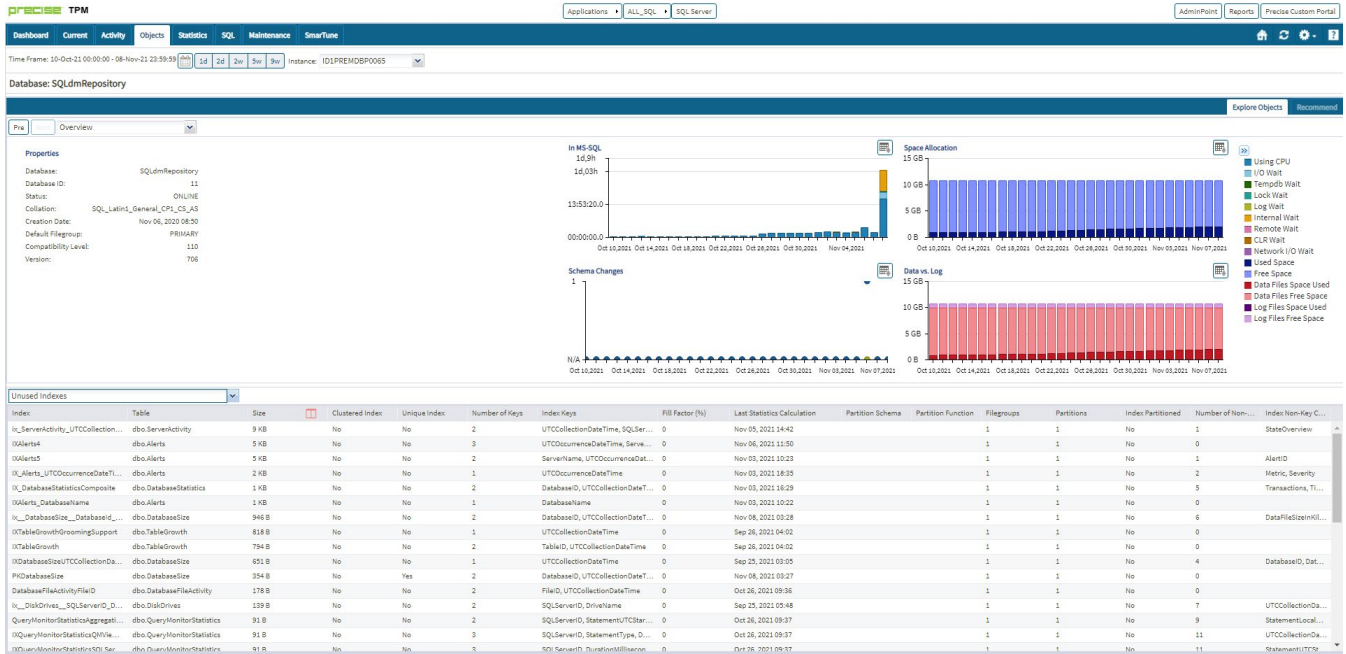
Precise can also show the SQL statements that a user is executing, which is very useful when a user complains about performance.



Precise shows the busiest stored procedures and allows you to drill down to the SQL statements that form the stored procedure.

Precise also highlights bad database design and can identify tables that are hot and also tables that need new indexes.

Precise can also show those indexes that are unused.



PRECISE

Precise helps database and IT administrators to find and fix database and application performance problems in physical, virtual, and cloud environments. Unlike its competition, it provides deep database optimization, end-to-end transaction view, isolation of problems and causes, scalable deployment, what-if analysis for changes, and history, trending, and planning.

Start for Free

